

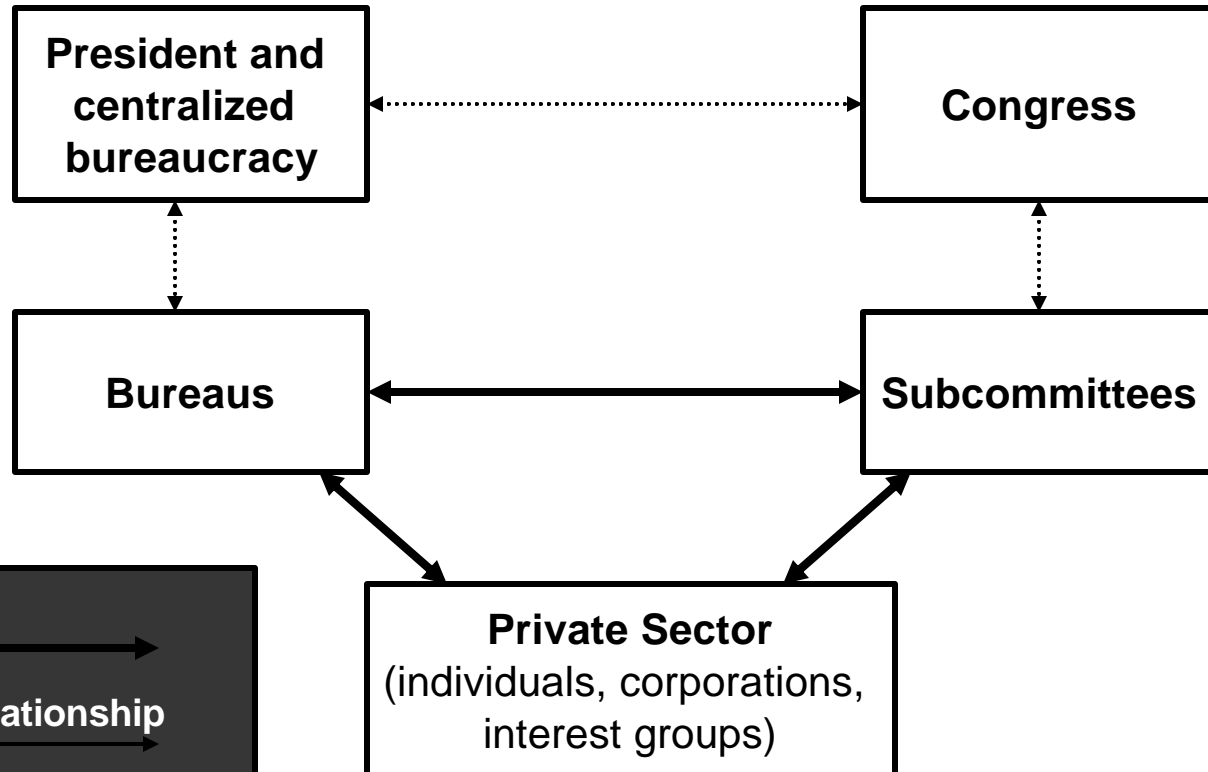


Political Science 517 – Legislative Politics

Prof. Randall Ripley



Relative Importance of Relationships for Determining Different Kinds of Policy



Key

Very Important Relationship

Moderately Important Relationship

Relatively Unimportant Relationship

DISTRIBUTIVE

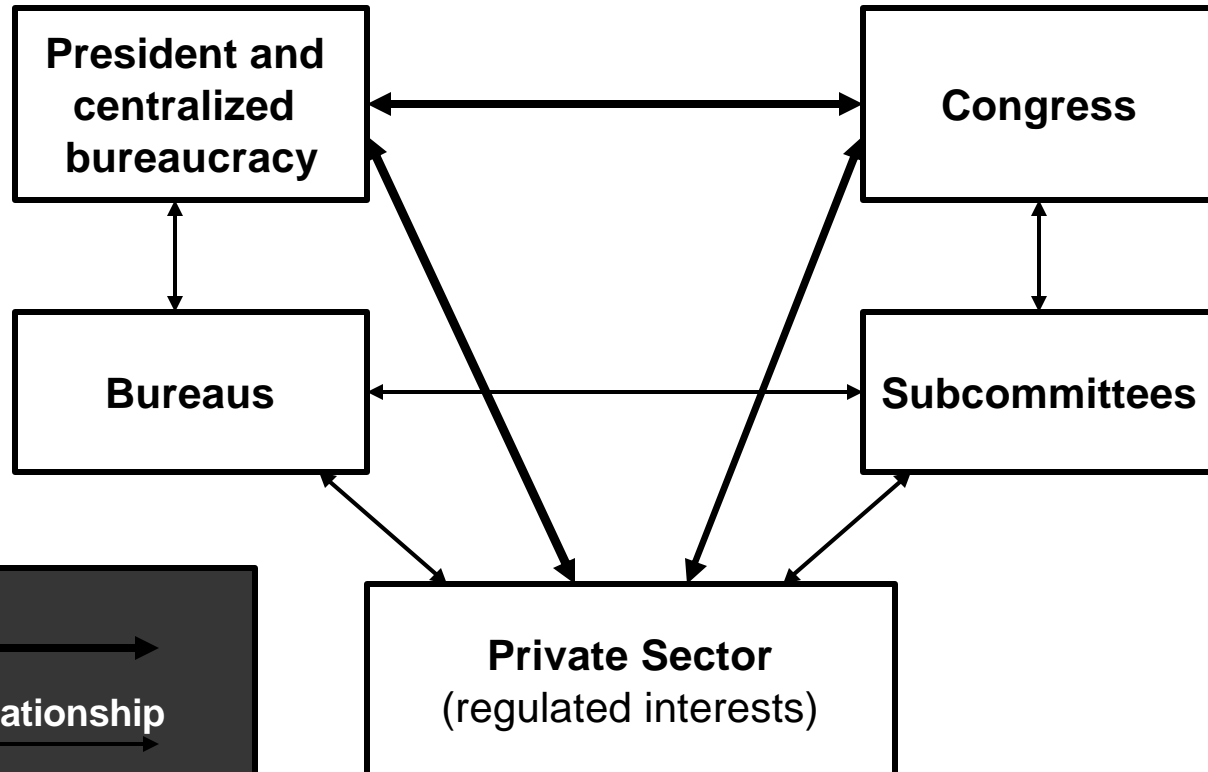


Political Science 517 – Legislative Politics

Prof. Randall Ripley



Relative Importance of Relationships for Determining Different Kinds of Policy



Key

Very Important Relationship

Moderately Important Relationship

Relatively Unimportant Relationship

PROTECTIVE REGULATORY

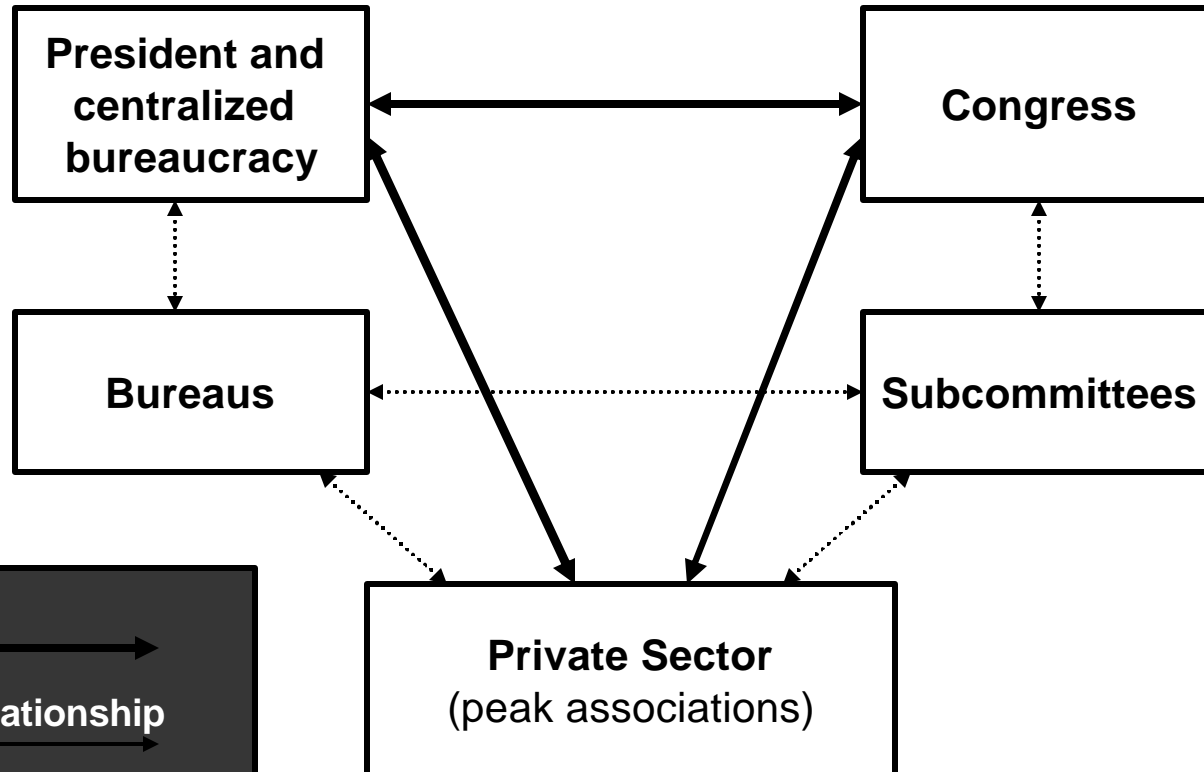


Political Science 517 – Legislative Politics

Prof. Randall Ripley



Relative Importance of Relationships for Determining Different Kinds of Policy



Key

Very Important Relationship

Moderately Important Relationship

Relatively Unimportant Relationship

REDISTRIBUTIVE

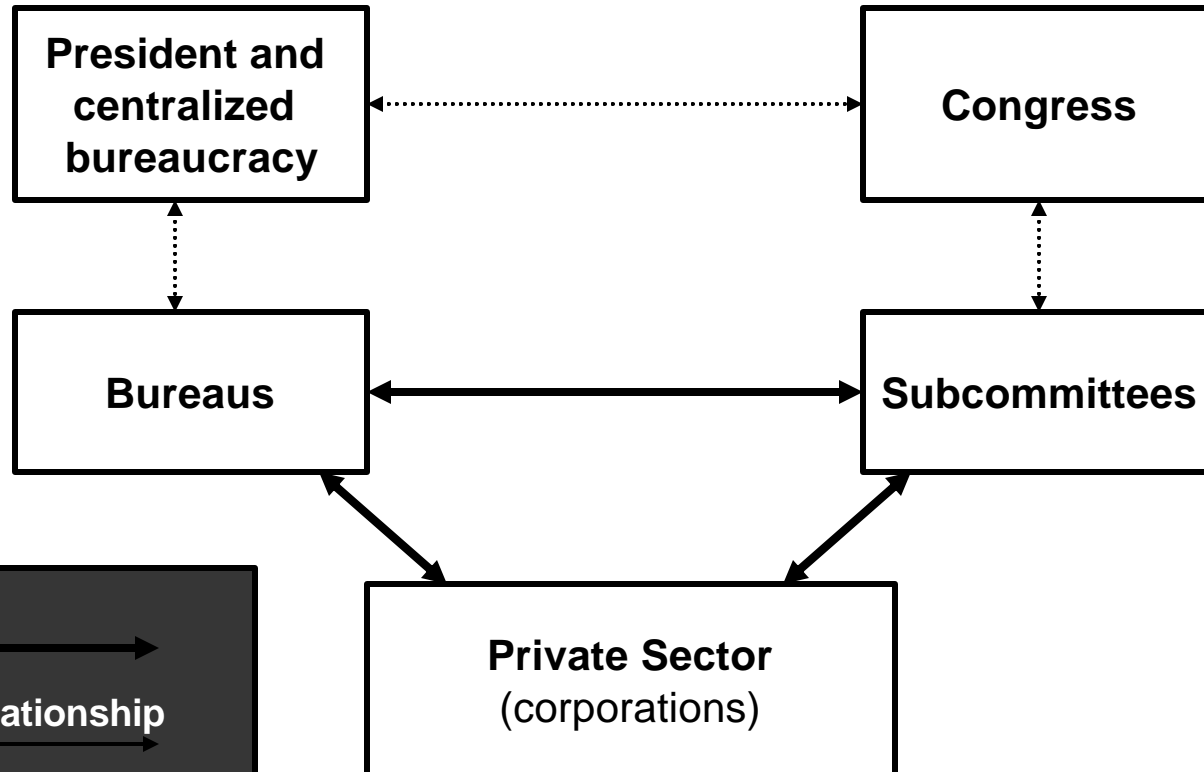


Political Science 517 – Legislative Politics

Prof. Randall Ripley



Relative Importance of Relationships for Determining Different Kinds of Policy



Key

Very Important Relationship

Moderately Important Relationship

Relatively Unimportant Relationship

STRUCTURAL

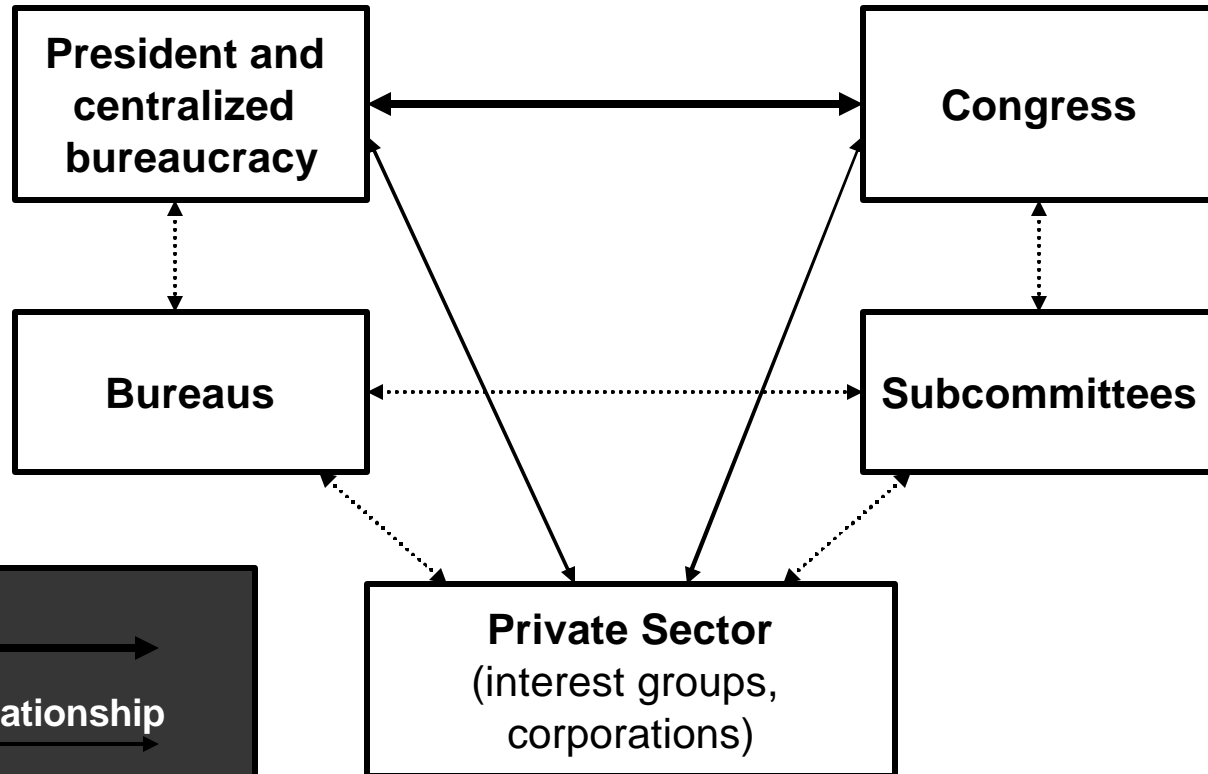


Political Science 517 – Legislative Politics

Prof. Randall Ripley



Relative Importance of Relationships for Determining Different Kinds of Policy



Key

Very Important Relationship

Moderately Important Relationship

Relatively Unimportant Relationship

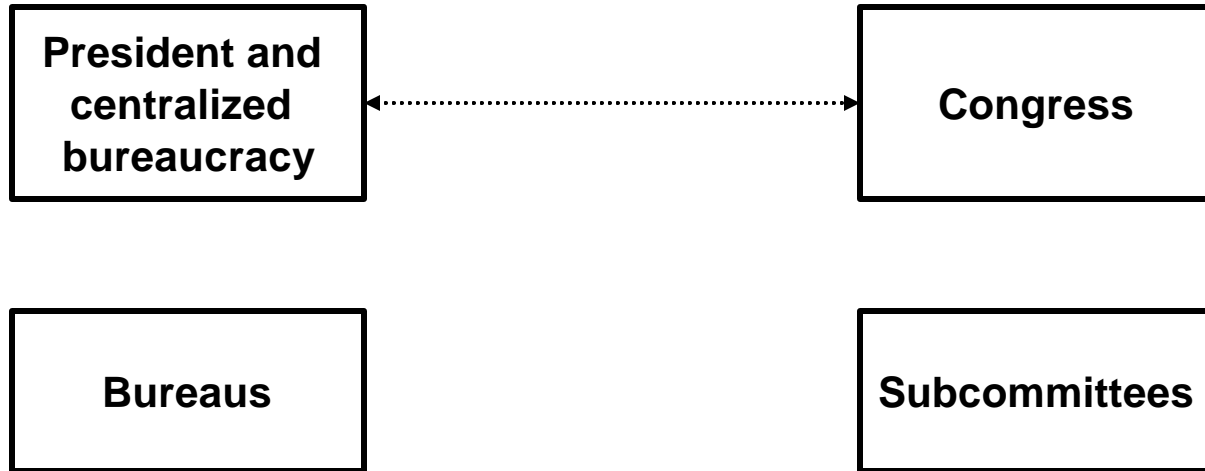
STRATEGIC



Political Science 517 – Legislative Politics
Prof. Randall Ripley



Relative Importance of Relationships for Determining Different Kinds of Policy



Key

Very Important Relationship

Moderately Important Relationship

Relatively Unimportant Relationship

Private Sector
 (peak associations)

CRISIS



Political Science 517 – Legislative Politics

Prof. Randall Ripley



Decision-Making Patterns for Different Types of Policy Statements

RELATIVE ACCESS OF:

Policy Type	President, Presidency, & Centralized Bureaucracy	Bureaus	Congress	Committees and Sub-Committees	Private Sector
Distributive (Domestic)	Low	High	Low (supports sub-committees)	High	High (the subsidized)
Protective Regulatory (Domestic)	Moderately High	Moderate	Moderately High	Moderate	Moderately High (the Regulated Interests)
Redistributive (Domestic)	High	Moderately Low	High	Moderately Low	High (Peak Assoc. representing clusters of interest groups.)
Structural (Foreign and Defense)	Low	High	Low (supports sub-committees)	High	High (the subsidized)
Strategic (Foreign and Defense)	High	Low	High (often resp. to executive)	Low	Moderate (interest groups, corps.)

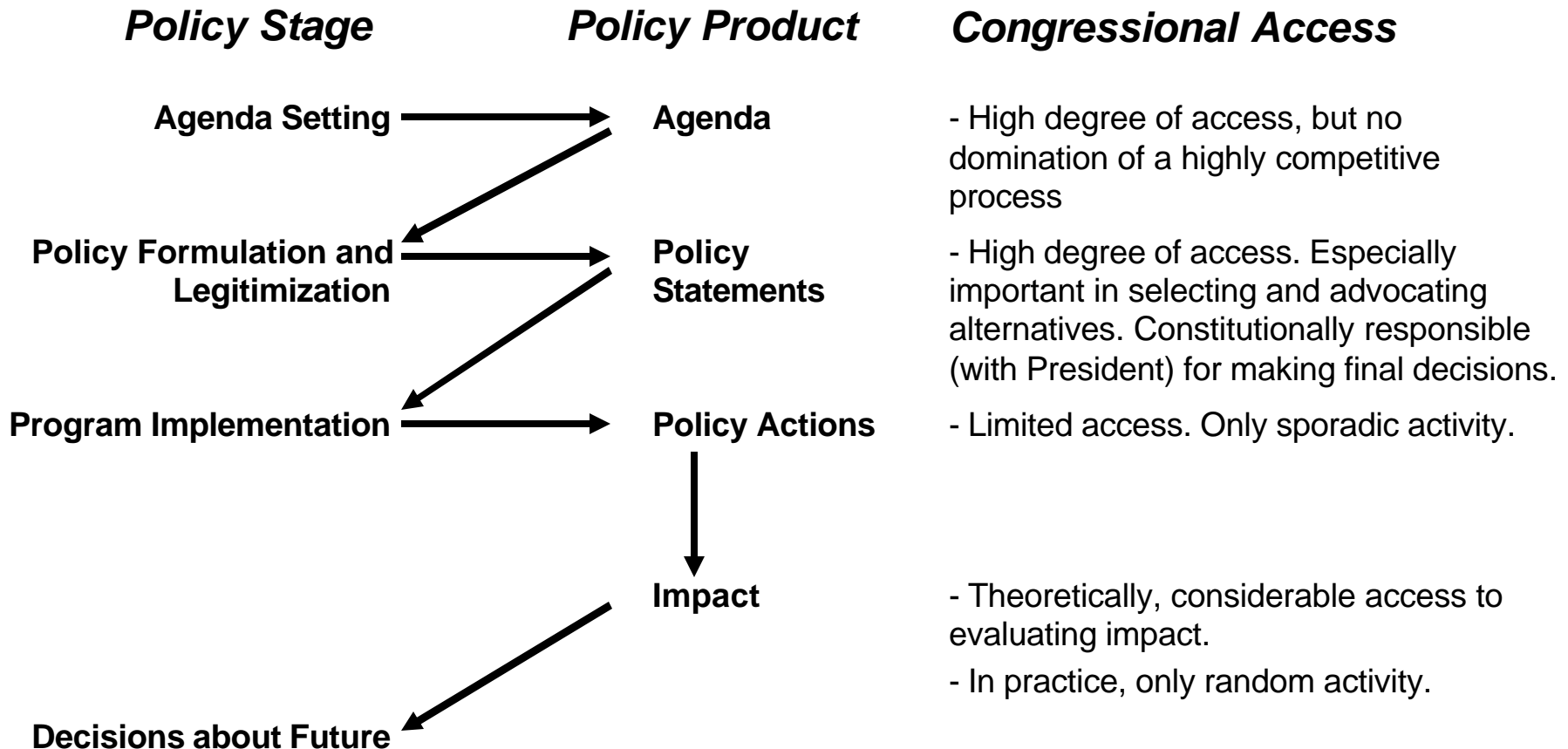


Political Science 517 – Legislative Politics

Prof. Randall Ripley



Congressional Access to Policy Stages and Policy Products





Political Science 517 – Legislative Politics
Prof. Randall Ripley



**Potential Access of Principle Institutional Actors to Policy Formulation
 and Legitimation Activity**

Activity	<i>Institutional Actor</i>			
	Congress	Presidency	Bureaucracy	Interest Groups
Information Collection, analysis, and dissemination	X	X	XXX	X
Alternative Development and Selection	XX	XX	XX	X
Advocacy	XX	XXX	XX	XX
Formal decisions	XXX	XXX	---	---

XXX = Primary Access
 XX = Considerable Access
 X = Some Access
 --- = Little or No Access



Political Science 517 – Legislative Politics
Prof. Randall Ripley



Models of Congressional Involvement in Policy Making

MODEL	Principle Source of Initiation	Degree of Congressional Participation in Shaping Details	Degree of Executive Participation in Shaping Details	Final Legislative Product
Executive Dominance	Executive	Low	High	Yes
Joint Program Development	Executive, Congress or both	High	High	Yes
Congressional Dominance	Congress	High	Low	Yes
Stalemate	Executive, Congress or both	High	High	No

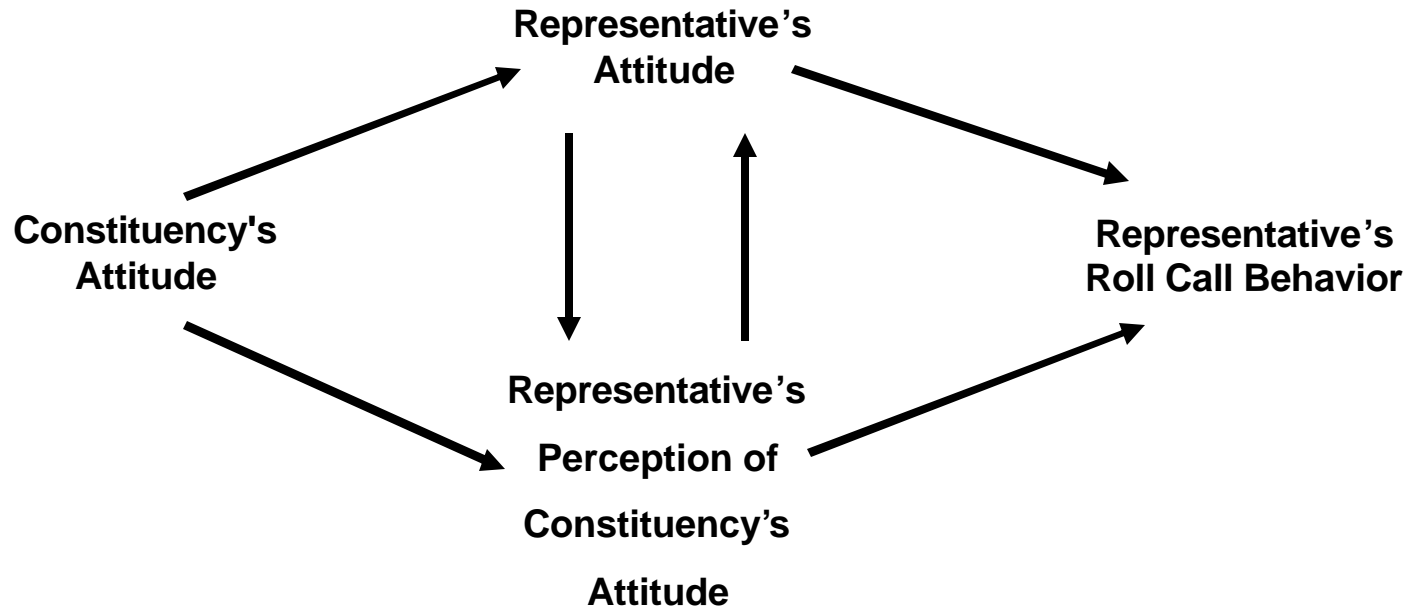


Political Science 517 – Legislative Politics

Prof. Randall Ripley



The Linkages between Constituency Attitudes and Representatives' Roll Call Behavior



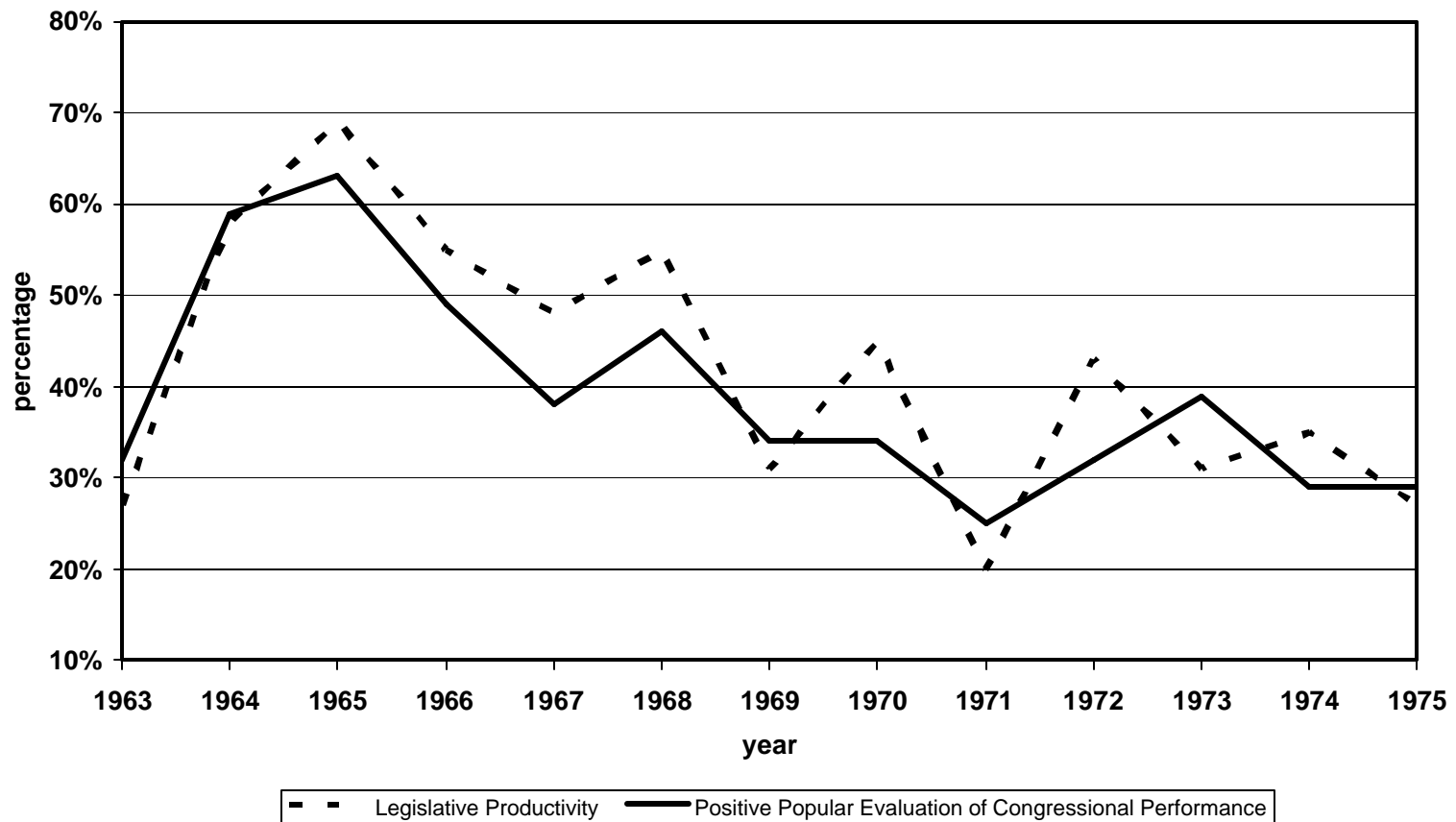


Political Science 517 – Legislative Politics

Prof. Randall Ripley



The Relationship Between Legislative Productivity and Positive popular Evaluation of Congressional Performance, 1963 - 1974



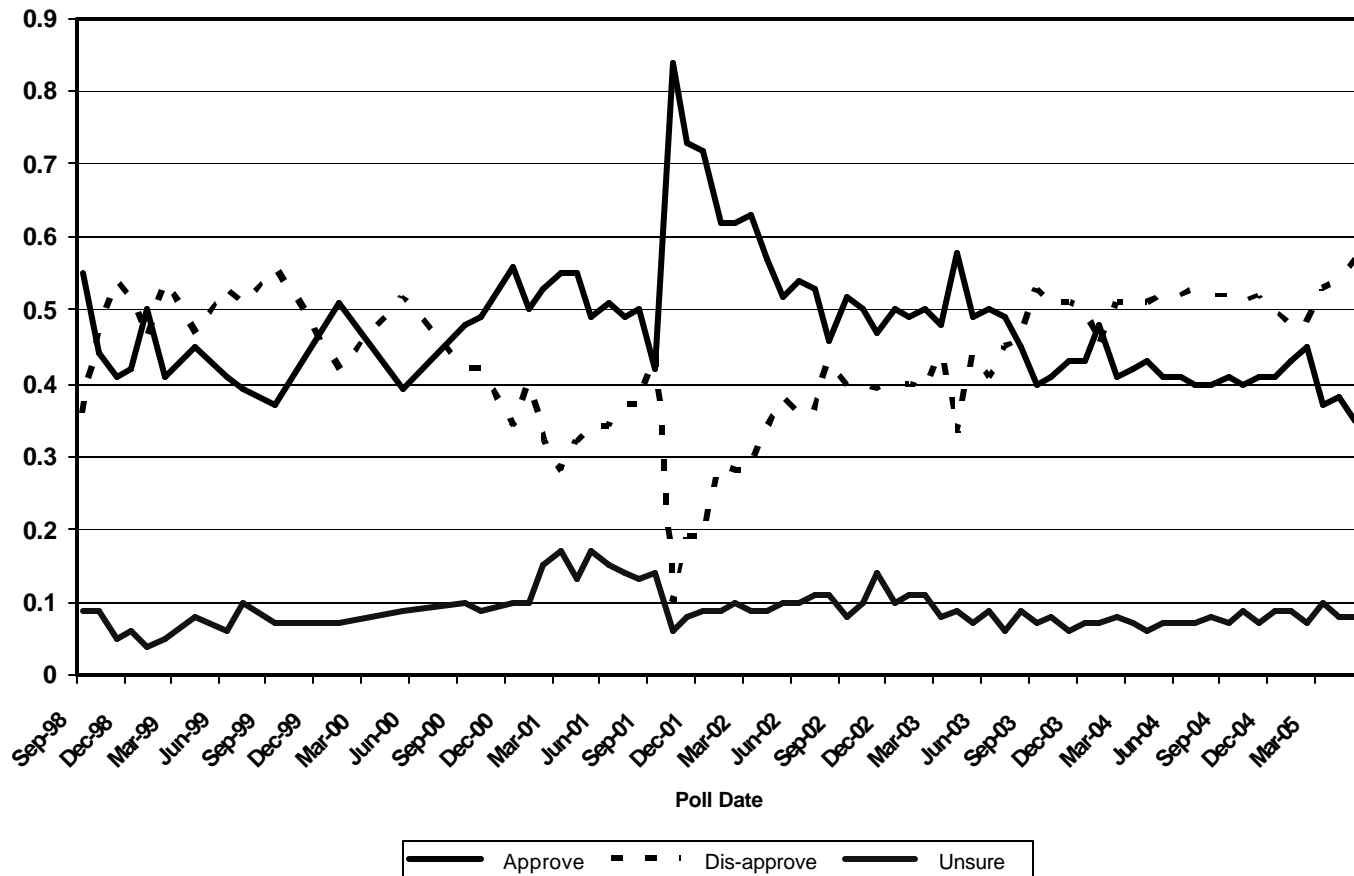


Political Science 517 – Legislative Politics

Prof. Randall Ripley



"Do you approve or disapprove of the way Congress is handling its job?"





Political Science 517 – Legislative Politics

Prof. Randall Ripley



Congressional Influence in Foreign Policy

